





CHASE ENERGY CANADA LIMITED

Fundamental Summary Report for the Ontario Energy Industry

December 11, 2008

5X16 Peak Ontario Forward Power (CAD\$/MWh) & Natural Gas Prices (CAD\$/GJ)


	Forecast	Heat Rate	Prev Mid	Today's	MTD	YTD	YTD	YTD		Forecast	Prev	Today's	MTD	YTD	YTD	YTD
Power	Today	Today	Market	Change	Avg.	Avg.	High	Low	Dawn	Today	Settle	Change	Avg.	Avg.	High	Low
Day Ahead	\$58.00	8.06	\$60.00	-\$2.00	\$62.09	\$64.05	\$140.0	\$30.00	Day Ahead	\$7.20	\$7.34	-\$0.14	\$7.66	\$9.21	\$13.23	\$7.06
Bal Month	\$56.00	7.78	\$57.00	-\$1.00	\$62.82	\$64.89	\$102.0	\$40.00	Bal Month	\$7.20	\$7.34	-\$0.14	\$7.66	\$9.22	\$13.27	\$7.06
Jan-09	\$64.00	8.91	\$64.50	-\$0.50	\$65.55	\$65.07	\$75.69	\$56.88	Jan-09	\$7.18	\$7.30	-\$0.12	\$7.54	\$10.21	\$14.25	\$7.06
Feb-09	\$64.00	8.82	\$64.50	-\$0.50	\$65.55	\$64.27	\$74.85	\$56.25	Feb-09	\$7.26	\$7.38	-\$0.12	\$7.59	\$10.24	\$14.27	\$7.11
Mar-09	\$56.50	7.73	\$57.00	-\$0.50	\$58.09	\$64.20	\$75.69	\$53.75	Mar-09	\$7.31	\$7.43	-\$0.12	\$7.59	\$10.12	\$14.10	\$7.13
Q2 2009	\$55.25	7.51	\$55.75	-\$0.50	\$56.61	\$67.79	\$80.40	\$55.00	Q2 2009	\$7.36	\$7.48	-\$0.12	\$7.69	\$9.18	\$11.99	\$7.21
Q3 2009	\$69.25	8.94	\$69.75	-\$0.50	\$70.61	\$81.02	\$95.20	\$68.00	Q3 2009	\$7.75	\$7.87	-\$0.12	\$8.06	\$9.36	\$12.10	\$7.59
Q4 2009	\$63.00	6.95	\$63.50	-\$0.50	\$64.25	\$72.17	\$85.30	\$58.75	Q4 2009	\$9.06	\$9.18	-\$0.12	\$9.34	\$9.93	\$12.57	\$8.40
Cal 2009	\$62.25	7.93	\$62.75	-\$0.50	\$63.59	\$70.82	\$84.10	\$59.40	Cal 2009	\$7.85	\$7.97	-\$0.12	\$8.17	\$9.66	\$12.72	\$7.58
Cal 2010	\$67.40	7.43	\$67.75	-\$0.35	\$67.99	\$72.86	\$82.00	\$64.10	Cal 2010	\$9.07	\$9.17	-\$0.10	\$9.26	\$9.50	\$11.48	\$8.21
Cal 2011	\$67.90	7.19	\$68.25	-\$0.35	\$68.49	\$73.15	\$81.50	\$63.60	Cal 2011	\$9.45	\$9.54	-\$0.09	\$9.59	\$9.35	\$10.98	\$8.09
Cal 2012	\$67.00	7.08	\$67.25	-\$0.25	\$67.49	\$72.20	\$79.00	\$62.15	Cal 2012	\$9.46	\$9.54	-\$0.08	\$9.55	\$9.24	\$10.85	\$8.03
Cal 2013	\$67.00	6.99	\$67.25	-\$0.25	\$67.49	\$73.15	\$78.00	\$63.15	Cal 2013	\$9.58	\$9.65	-\$0.07	\$9.58	\$9.20	\$10.95	\$7.90

IESO INFORMATION: (10:00 am EST)

Current Market Demand: **22,142 MW**
 Current Hourly Price: **\$54.05 MWh**
 Hourly Uplift Charge Estimate: **\$2/MWh**

ICE Power Trades:

Ontario Energy Swap **0 MWh**
 OTC **45,600 MWh**
Alberta Ancillary **22,280 MWh**
 Energy Swap **17,360 MWh**
 OTC **46,650 MWh**

	Date	Base Load	Change	Off Peak	Change	On Peak	Change
Forecast For	Today	\$51.08	-\$9.59	\$39.61	-\$5.37	\$56.81	-\$11.69
IESO Summary	Dec 10, 2008	\$60.67	-\$6.66	\$44.99	+\$2.06	\$68.51	-\$11.02
Month to Date Avg	Dec 10, 2008	\$57.68	+\$0.33	\$45.68	-\$0.08	\$67.28	+\$0.18
Year to Date Avg	Dec 10, 2008	\$49.28	+\$0.03	\$34.83	+\$0.03	\$63.02	+\$0.02
Average Load	Dec 10, 2008	19,985	880	17,363	1108	21,296	765
Year to Date Avg 2007	Dec 11, 2007	\$48.32	+\$0.06	\$35.42	+\$0.01	\$60.93	+\$0.09
Price One Year Ago	Dec 11, 2007	\$49.34	-\$18.81	\$35.36	-\$2.68	\$56.33	-\$26.88

US Daily Peak POWER PRICES (US\$):

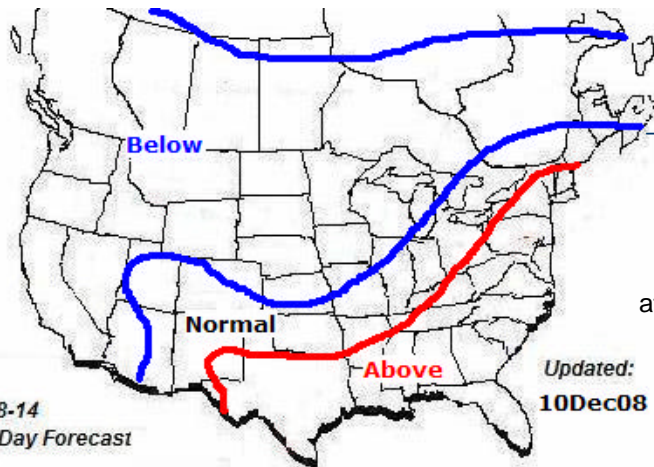
	Cin Hub Real Time	COB	Entergy	Ercot	Four Corners	Mead	Nepool MH DA LMP	NP-15	NYISO A	Palo Verde	PJM WH Real Time	SP-15
10-Dec-08	\$48.21	\$57.04	\$45.05	\$45.70	\$46.92	\$50.67	\$63.29	\$57.69	\$54.41	\$47.63	\$60.35	\$57.31
Change	\$0.89	\$5.54	\$4.93	-\$0.40	\$5.75	\$4.96	\$4.37	\$5.20	\$0.03	\$5.24	\$7.69	\$5.48

Chase Energy Canada Limited (Chase) provides this information solely as a service to its customers. The information is not to be considered investment advice or an indication to buy or sell. Although Chase has taken reasonable precautions to ensure the accuracy of the information presented, Chase does not warrant its accuracy and assumes no liability of any kind with respect to the information. Chase believes any forward-looking statements contained herein are based on reasonable assumptions; no assurance can be given as to their ultimate accuracy. Chase Energy is copyright protected. Please contact Mandy Burgess at mandy.burgess@chaseenergy.com or (705) 309-0444 for more information.

MARKET SUMMARY: January natural gas futures pushed to a session high of \$5.792 in morning trade but failed to hold on to the gains as a wave of selling helped lower price closing at \$5.686, up 10.7 cents. Even with a rig count reduction of 800 in the US -- which is what's needed to rebalance the market -- natural gas production shut-ins are likely this summer, Raymond James & Associates Inc. analysts reported...Here we go again, The 2009 Atlantic hurricane season is likely to look much like the just-concluded 2008 season: above-average activity, with an above-average chance of at least one major (Category Three or greater) hurricane making landfall on the Gulf Coast, according to weather forecasters at Colorado State University... Empreendimento Eolico do Vale do Minho S.A. has begun commercial operation of Europe's largest onshore windfarm, the 240MW Ventominho Windfarm, in northwestern Portugal.

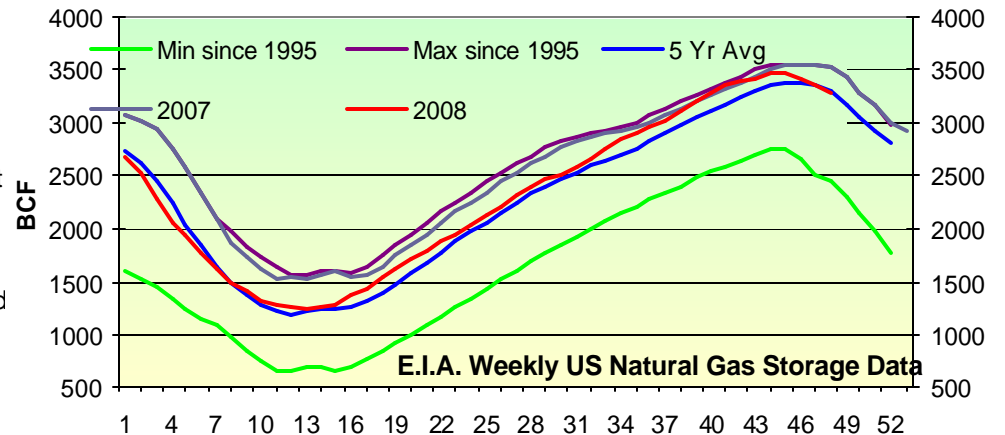
EIA US Natural Gas Storage

Region	Weekly Activity	Prev Week	Diff	% Full	Prev. Yr	Prev Yr % Full	Prev Yr % Chg	Prev 5Yr Avg	Prev 5Yr % Full	Avg Last 5 Yr
East	1,871	1,929	-58	102%	1,860	101%	1%	1,835	100%	-31
West	465	466	-1	92%	456	90%	2%	416	82%	Last Yr
Prod	955	963	-8	100%	1,020	107%	-7%	930	98%	-12
Total	3,291	3,358	-67	100%	3,336	101%	-1%	3,181	97%	
				Diff	-45		Diff	110		



TODAY'S QUOTE

In the end, no amount of American forces can solve the political differences that lie at the heart of somebody else's civil war.
Barack Obama



NYMEX NEW YORK MERCANTILE EXCHANGE		Dec 10	Daily Change	7 Day Change	30 Day Change	Dawn HH Basis
Nat Gas	Henry Hub Spot	\$5.675	+\$0.107	-\$0.879	-\$1.346	\$0.495
(US\$/MMBtu)	Jan-09	\$5.686	+\$0.107	-\$0.331	-\$1.165	\$0.420
	Feb-09	\$5.746	+\$0.114	-\$0.304	-\$1.170	\$0.420
	Mar-09	\$5.794	+\$0.129	-\$0.251	-\$1.092	\$0.420
	Q2 2009	\$5.938	+\$0.114	-\$0.244	-\$0.972	\$0.317
	Q3 2009	\$6.258	+\$0.115	-\$0.240	-\$0.939	\$0.320
	Cal 2009	\$6.208	+\$0.115	-\$0.246	-\$0.957	\$0.345
	CAD/US FX	\$1.2557	-\$0.0046	+\$0.0017	+\$0.0615	
Crude Oil	Front Month	\$43.52	+\$1.450	-\$0.150	-\$15.810	
Heating Oil	Front Month	\$1.403	-\$0.034	-\$0.106	-\$0.526	

Future Source Power	NEPOOL	NYISO A	NYISO G	NYISO J	PJM
Jan-09	\$73.44	\$56.75	\$74.67	\$89.92	\$61.38
Change	+\$0.18	-\$0.08	-\$0.36	-\$0.86	-\$0.12
Feb-09	\$73.44	\$56.75	\$74.67	\$89.92	\$60.38
Change	+\$0.18	-\$0.08	-\$0.36	-\$0.86	-\$0.12
Mar-09	\$64.11	\$51.50	\$69.50	\$77.00	\$58.40
Change	+\$0.46	+\$0.54	+\$0.21	+\$0.62	+\$0.40
Apr-09	\$62.75	\$51.50	\$69.50	\$77.00	\$57.16
Change	+\$0.50	+\$0.54	+\$0.21	+\$0.62	+\$0.28
May-09	\$63.00	\$47.25	\$70.25	\$80.00	\$57.13
Change	+\$0.42	+\$0.25	+\$0.25	+\$0.87	+\$0.30